

The Annexe



Quality

self catering

accommodation

PORT CHARLOTTE

Isle of Islay

tel: 01496 850 053

bookings@islayannexe.co.uk

Situated one mile outside the picturesque village of Port Charlotte, the Annexe is a new and modern self-catering accommodation. The location promises peace and tranquillity with stunning views over Loch Indaal and Glenn Mhor. It is the perfect base for exploring the beautiful island of Islay, which boasts breathtaking scenery, historical sites, walks, beaches, wildlife.....and not forgetting the 9 malt whisky distilleries!

The Annexe is tastefully decorated and comprises a small porch, shower room, open plan kitchen/living/dining area and one bedroom.

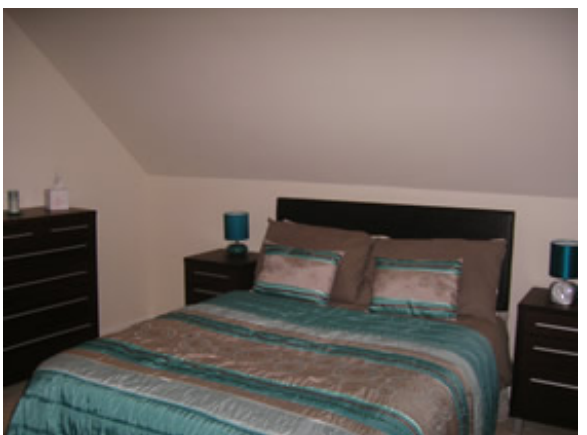
The kitchen is fully equipped with crockery and utensils, oven, ceramic hob, microwave, fridge and washing machine.

There is a clothesline in the designated garden area to the side of the annexe. Bedding, towels and basic cleaning materials are supplied.

The bedroom comprises one double bed and a single bed with optional pull-out full height single underneath. The sofa bed in the lounge is suitable for occasional use only.

The Annexe also offers:

- Flat screen LCD TV
- DVD Player
- Freesat/Freeview Digital TV
- Free Wireless Internet Access
- Private Parking



Directions to Port Charlotte from Islay Airport

As you leave the airport car park turn left on to the A846. Follow the road approximately 6 miles to Bowmore. The road continues through Bowmore, turning right at C&E Roy. Continue along this road with Loch Indaal on your left hand side until you reach the Village of Bridgend.

After you pass the petrol station and Spar shop on your left, there is a junction with a sign for Portnahaven to the left, turn left here. You are now on the A847. Follow this road along Loch Indaal for approximately 8 miles, passing through the Village of Bruichladdich and then Port Charlotte.

As you enter the village you will pass the Port Charlotte Hotel on your left. Continue along Main Street, passing the Lochindaal Hotel on your right. You will then come to a junction where there is a sign for Kilchiaran up to the right. Turn right here into School Street, continue up the single track road for a mile, you will pass a Scottish Water treatment station and at the top of the hill on the left are two houses.....The Annexe is next to the roadside, turn left and left again over the cattle grid into the annexe driveway.

Arriving by Ferry

Islay has two ferry ports - Port Askaig and Port Ellen. Guests are advised to note that arrival and departure ports are sometimes different. By the time you arrive at the incorrect one it is often too late to make the check-in time at the other port.

Port Ellen is approximately 20 miles from Port Charlotte and Port Askaig is approximately 16 miles away.

Port Ellen

When you arrive at Port Ellen, follow the road from the terminal turning left at the first junction. Follow the A846 north for about 4 miles until you pass the Airport on the left. Thereafter follow the detailed directions from the airport above.

Port Askaig

When you arrive at Port Askaig, follow the road up the hill from the terminal and continue approximately 8 miles on the A846. You will pass through the villages of Keills and Ballygrant and will eventually reach Bridgend. At the signpost for Portnahaven, turn right on to the A847. Follow this road along Loch Indaal for approximately 8 miles, passing through the Village of Bruichladdich and then Port Charlotte.

As you enter the village you will pass the Port Charlotte Hotel on your left. Continue along Main Street, passing the Lochindaal Hotel on your right. You will then come to a junction where there is a sign for Kilchiaran up to the right. Turn right here into School Street, continue up the single track road for a mile, you will pass a Scottish Water treatment station and at the top of the hill on the left are two houses...The Annexe is next to the roadside, turn left onto the farm track and left again over the cattle grid into the annexe driveway.

Local Attractions and Amenities

Grocery Shopping

Port Charlotte has a Village Shop and Post Office, which sells a wide range of goods. You can also rent DVDs there and a recent addition is an ATM cash machine (the nearest bank is in Bowmore, approximately 12 miles away). There is also a petrol station.

For more extensive shopping, a trip to the Mini-Market at Bruichladdich is recommended or you can visit the Spar Shop at Bridgend (the coffee served at the Bruichladdich Mini-Market is worth trying too). Bowmore, the main town on Islay, has a wide range of shops including a Co-op Supermarket.

Dining within Port Charlotte:

- The Port Charlotte Hotel - a wide selection of locally sourced produce. You can choose from a range of restaurant or bar meals
- The Croft Kitchen - a wide range of meals, snacks and drinks, home baking (recommended) and outdoor tables in the summer
- Port Mor - cafe / restaurant serving a good choice of meals and snacks, with superb views
- The Lochindaal Hotel - a lively pub, which also serves bar meals
- An Taigh Osda - a 'Boutique Hotel' with a recommended restaurant a mile and a half from Port Charlotte

The Museum of Islay Life

The museum has a large collection of information and exhibits in relation to all aspects of the island's history. Assistance is provided for those who wish to trace family history.

The Wildlife Centre

The Wildlife Centre provides information about Islay's natural heritage. There are several displays and 'hands on' activities for all ages. In summer, there are short expeditions for young explorers close to the village. Tickets are valid for a whole week.

Historical Sites

More detailed information about the following historical locations can be obtained from the Museum of Islay Life:

- Finlaggan - the ancient seat of the Lords of the Isles. For more information visit [The Finlaggan Website](#)
- Kilnave Chapel
- Kildalton Chapel and Cross
- The Military Graveyard at Kilchoman
- Kilchoman Church and Cross

Bicycle Hire

You can hire bicycles in Port Charlotte and this is one of the best ways to explore the island. There are very few steep hills so cycling on Islay is not too difficult. To hire a bike or for more information please telephone Port Charlotte Bike Hire on +44 (0) 1496 850488.

Port Mor Community Centre

A purpose-built community centre for the village of Port Charlotte, often the venue for popular ceilidh dancing and Visitors Welcome Evenings. The centre has a cafe/restaurant, function rooms and is next door to the play park and playing fields overlooking Loch Indaal.

Beaches

Islay has some of the finest unspoiled beaches in the UK and most are reasonably accessible. Be sure to visit Ardnave, Saligo or Machir Bay at Kilchoman. There is a fine coffee shop and visitor centre at Kilchoman Distillery close to Machir Bay. On the other side of the island is Big Strand - a sandy beach approximately 7 miles long. Rockside Farm arranges horse-riding for all levels of ability, these rides include a beach trek which is highly recommended.

Distilleries

Islay is perhaps best known for internationally for its fine Malt Whiskies. There are eight distilleries on Islay, all of which have visitor centres well worth visiting.

Ardberg Distillery has the reputation of providing good food. Below are

details of the distilleries and their websites:

- [Bruichladdich](#)
- [Bowmore](#)
- [Bunnahabhain](#)
- [Caol Ila](#)
- [Ardbeg](#)
- [Lagavulin](#)
- [Laphroaig](#)
- [Kilchoman](#)

Natural Heritage

Islay's unique natural heritage is all around, but visits to the RSPB centre at Gruinart are recommended.

Islay Birding in Port Charlotte

The village of Port Charlotte is the base of - [Islay Birding](#) - awarded and recognised as 'a 5 star experience' by Visit Scotland. Some of the previous guests of Port Charlotte Holidays have recommended the trips that are organised by Islay Birding - limited to up to six people, a unique way to explore the island.

Sports Facilities

The MacTaggart Leisure Centre offers a swimming pool, gym and associated activities for all ages. There are a number of places that offer pony trekking. Fishing and Shooting can be easily arranged during your visit. Islay Golf Club is situated at Machrie.

Annual Events

Islay has a wide variety of events at any time of the year. A diary of events is to be found at the Ileach (local community newspaper) website:

[Ileach Newspaper](#)

The main events on the Isle of Islay include:

- The Islay Jazz Festival
- [Islay Jazz Festival](#)
- The Whisky Festival
- [Whisky Festival](#)
- Walk Islay
- [Walk Islay](#)
- The Cantilena Festival
- [Cantilena Festival](#)